



THE
TRUST
for PUBLIC
LAND

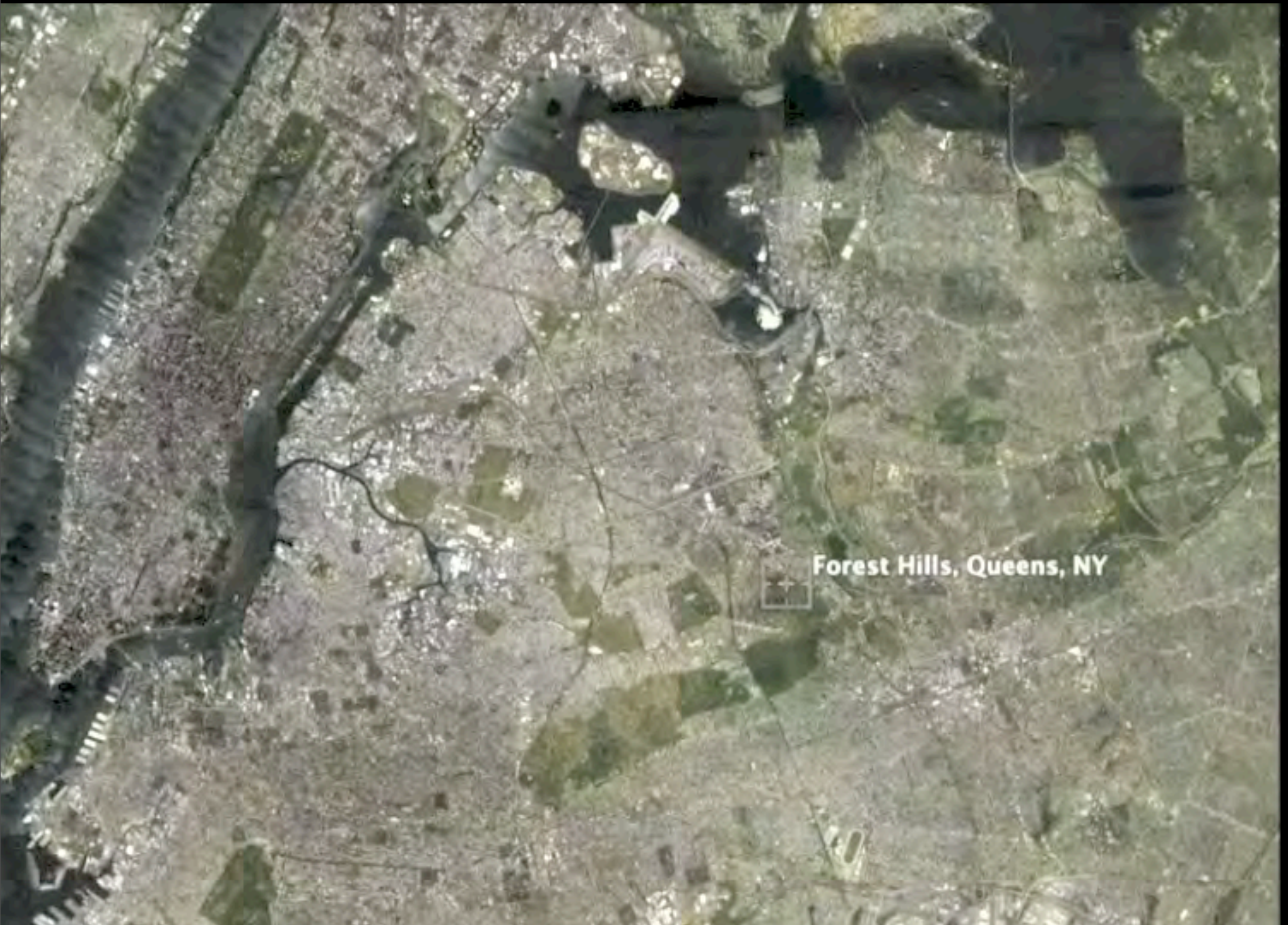
CONSERVING LAND FOR PEOPLE

Presentation to WRBA September 29, 2012

Agenda

- An Overview
- Who Are We?
- Friends of the QueensWay & TPL Mission
- Chronicle of the Rockaway Beach Branch/QueensWay
- Existing Conditions
- Inspiration
- Possibilities
- Public Benefits
- What Has been Done to Date
- Next Steps
- Q & A





Forest Hills, Queens, NY

Who are The Friends of the
QueensWay?

What is
The Trust for Public Land?

The Friends of the QueensWay is a Partnership



THE
TRUST
for PUBLIC
LAND

CONSERVING LAND FOR PEOPLE

The Friends of the QueensWay

A collective of over 2000
(and growing) mainly Queens
residents advocating for the
transformation of the RBB into a
community asset

Friends of the QueensWay Mission

The Mission of the Friends of the QueensWay (FQW) and TPL is to transform the abandoned former Rockaway Beach Branch between Rego Park and South Ozone Park into a new public park and cultural greenway.

Working closely with the communities along the QueensWay , FQW intends to develop the park in a way that is sustainable , spurs economic and cultural development , and improves quality of life.

The Trust for Public Land

The Trust for Public Land (TPL) is the nation's largest nonprofit committed to creating "parks for people".

Since 1978, TPL has helped create, protect, and revitalize more than 290 parks, playgrounds, community gardens, and natural areas in New York City

Chronology of the Rockaway Beach Branch Railroad/ QueensWay

1880's

Portion of the RBB Open

1910's

Fully built from White Pot Junction to the
Rockaways

1950

Fire on the Jamaica Bay Trestle closes the Line
South of South Ozone

1956

City of New York acquires the southern portion
of the line and connects the 'A' train to
Rockaways.

1962

LIRR ceases all operations along the RBB due to low ridership.

1969

City of New York approves plans for “White Pot Junction Express” rail service from Penn Station to JFK on the RBB.

1975

Citing a massive increase in project cost (billions in 2012 equivalent dollars) and lower ridership, MTA discontinues “White Pot Junction Express”

1997

While studying the RBB as part of the Air Train project, the Port Authority - citing cost, lack of capacity, environmental impacts on adjacent properties and adverse impact on main LIRR train schedules - declares reactivation of the line infeasible.

Existing Conditions



Metropolitan Avenue, Forest Hills



Yellowstone Boulevard



63rd Drive to Fleet Street, Rego Park



Collapsed Trestle North of Union Turnpike



Trestle over Yellowstone Blvd , Forest Hills



The Ravine through Forest Park

Wednesday, September 19, 12



Trestle over Fleet Street, Forest Hills



Fleet Street to Yellowstone Blvd , Forest Hills



Above Fleet Street , Forest Hills



Home Depot Parking Lot, Woodhaven and Metropolitan Ave



Ozone Park Station



Ozone Park Station

Inspiration

Promenade Plantes, Paris 1993

2.9 Miles



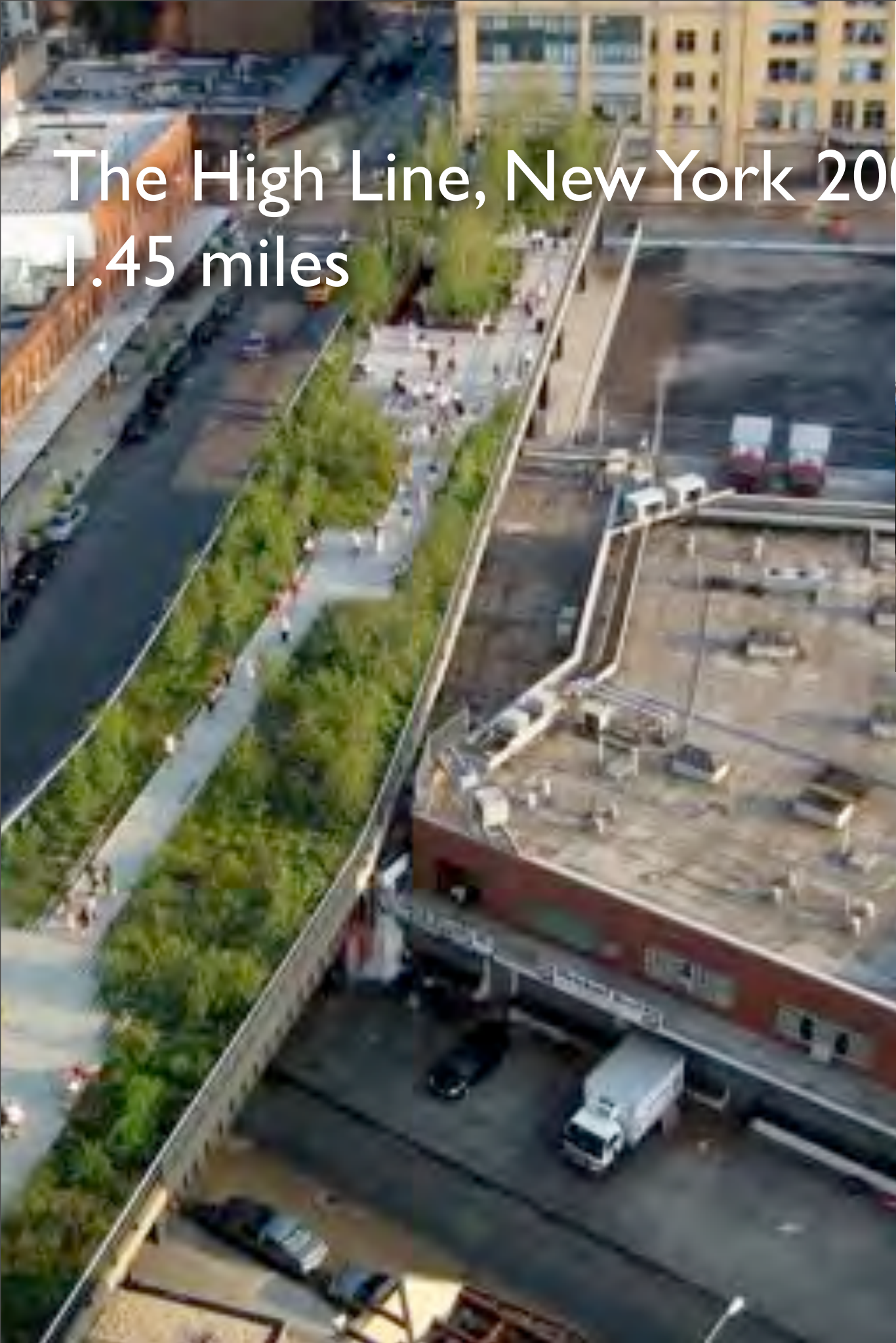


Promenade Plantes, Paris 1993

2.9 Miles

“Part of the Viaduc’s brilliance is this dual use. At grade the restored vaults now offer craftspeople who have been in operation for less than five years, or new artists and designers coming out of school, with the opportunity to operate a shop in these unique spaces for a period of five years at affordable rents.

The High Line, New York 2012 1.45 miles





The High Line, New York 2009

1.45 miles

“The High Line as a public park revitalized a swath of the city and generated

\$2 billion

in private investment and 12,000 jobs surrounding the park.”

- Patrick McGeehan, New York Times, June 5, 2011



The Bloomingdale Trail Chicago, 2016 2.7 miles



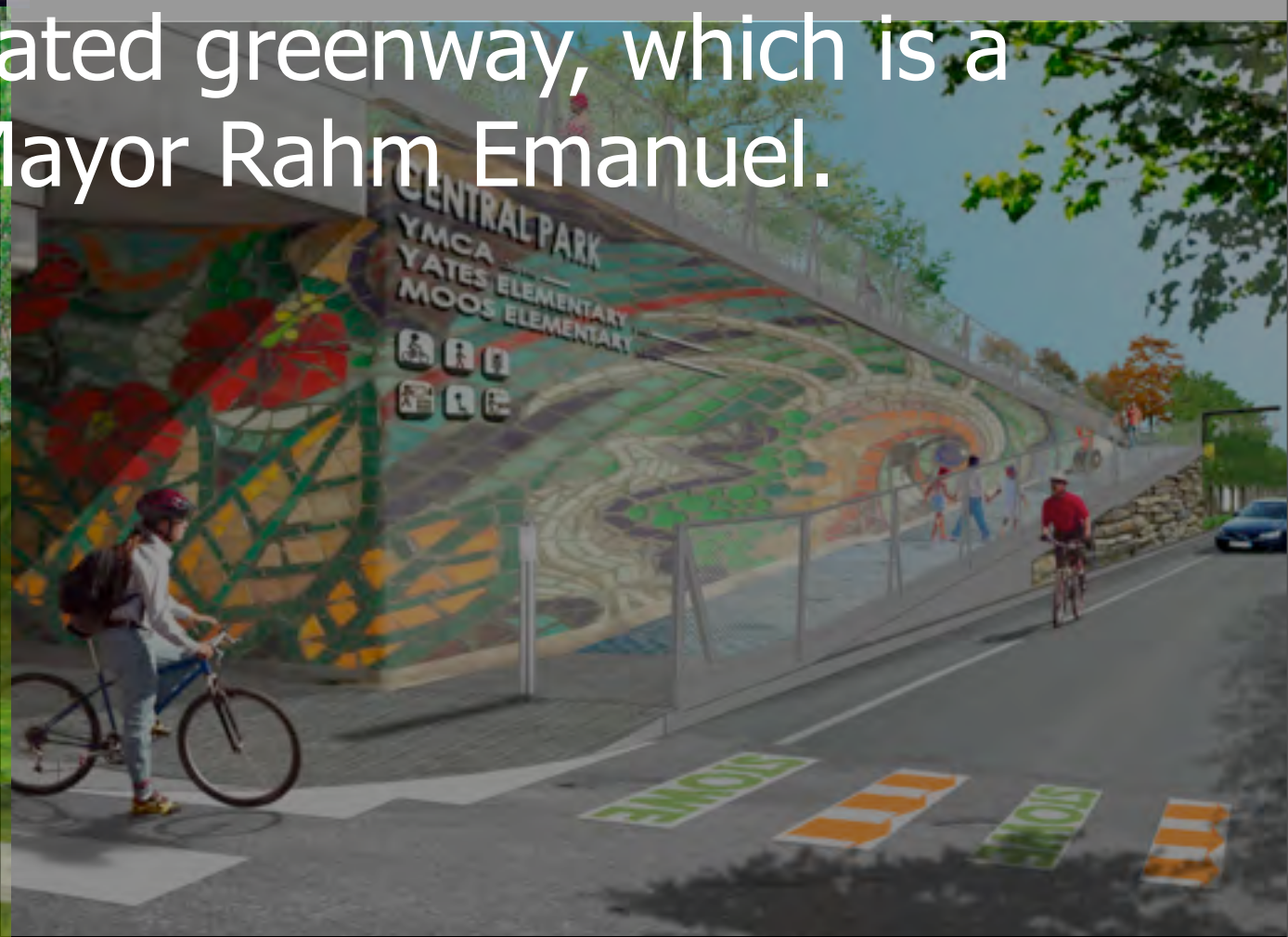
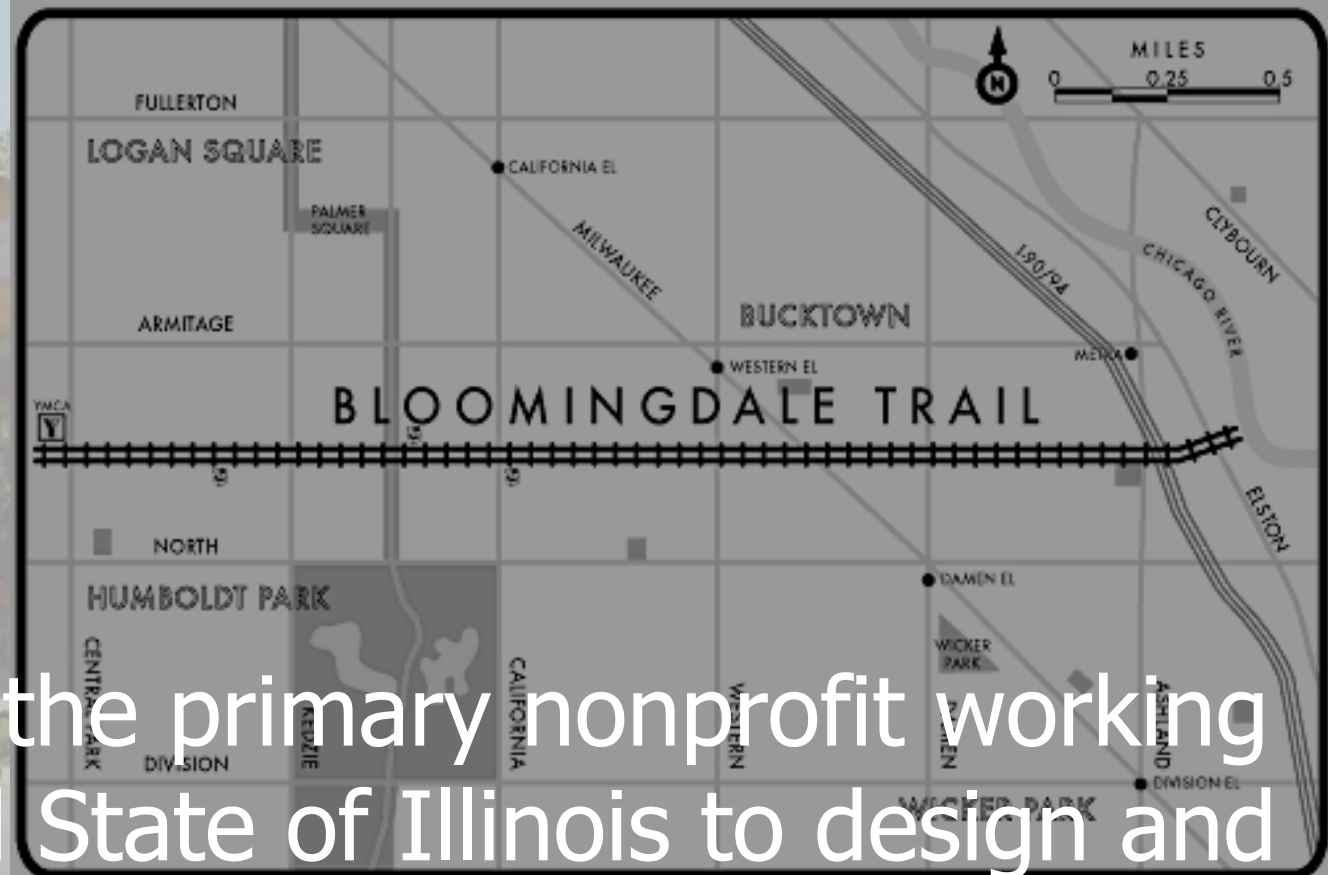
Friends of the Bloomingdale Trail is helping to maintain the community's mapping resources about the Trail.



The Bloomingdale Trail Chicago, 2016 2.7 miles

The Trust for Public Land is the primary nonprofit working with the City of Chicago and State of Illinois to design and build this 2.7 mile elevated greenway, which is a major priority of Mayor Rahm Emanuel.

Friends of the Bloomingdale Trail is helping to maintain the community's mapping resources about the Trail.



The Embankment Jersey City 2016

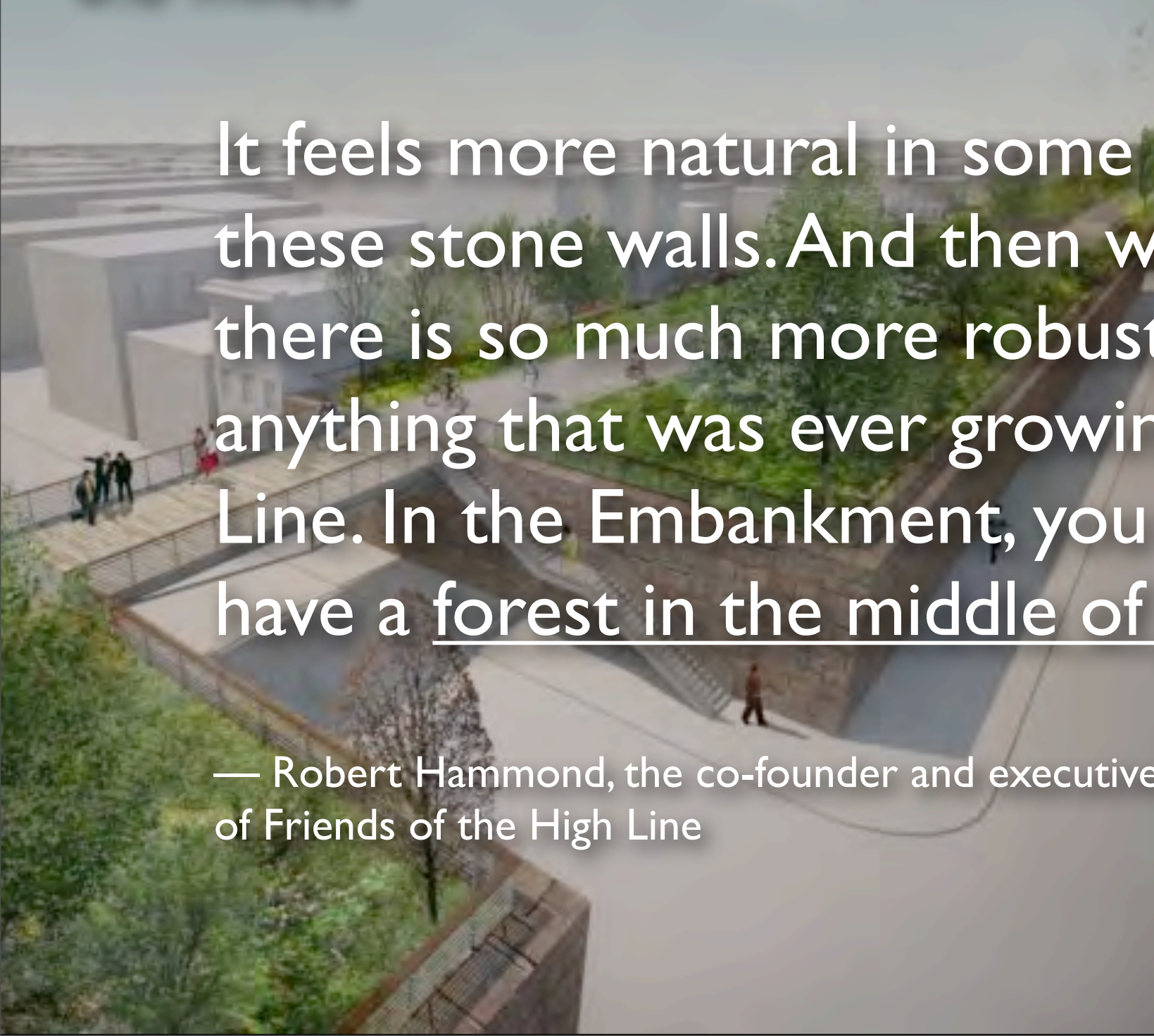
0.6 miles





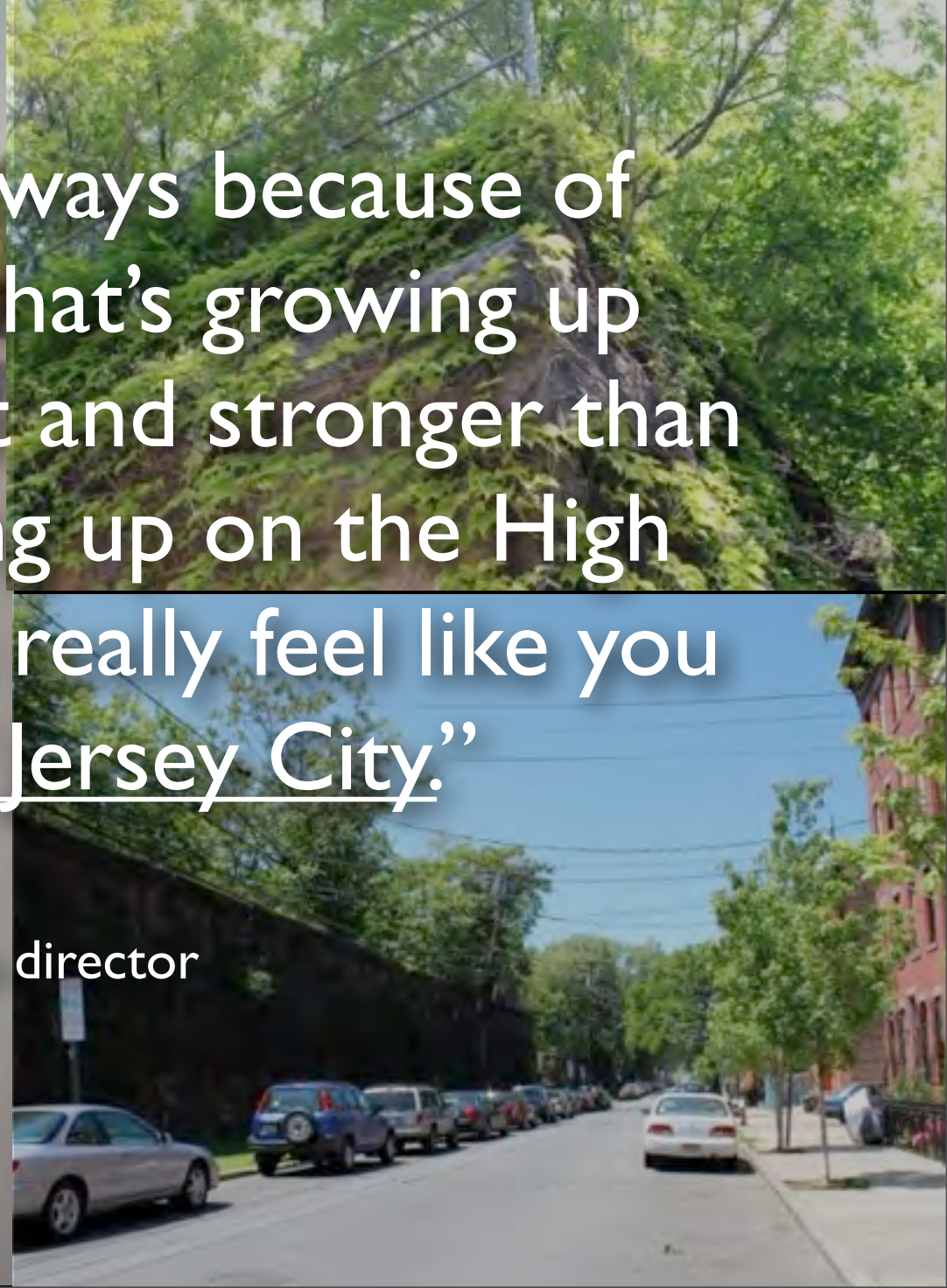
The Embankment Jersey City 2016

0.6 miles



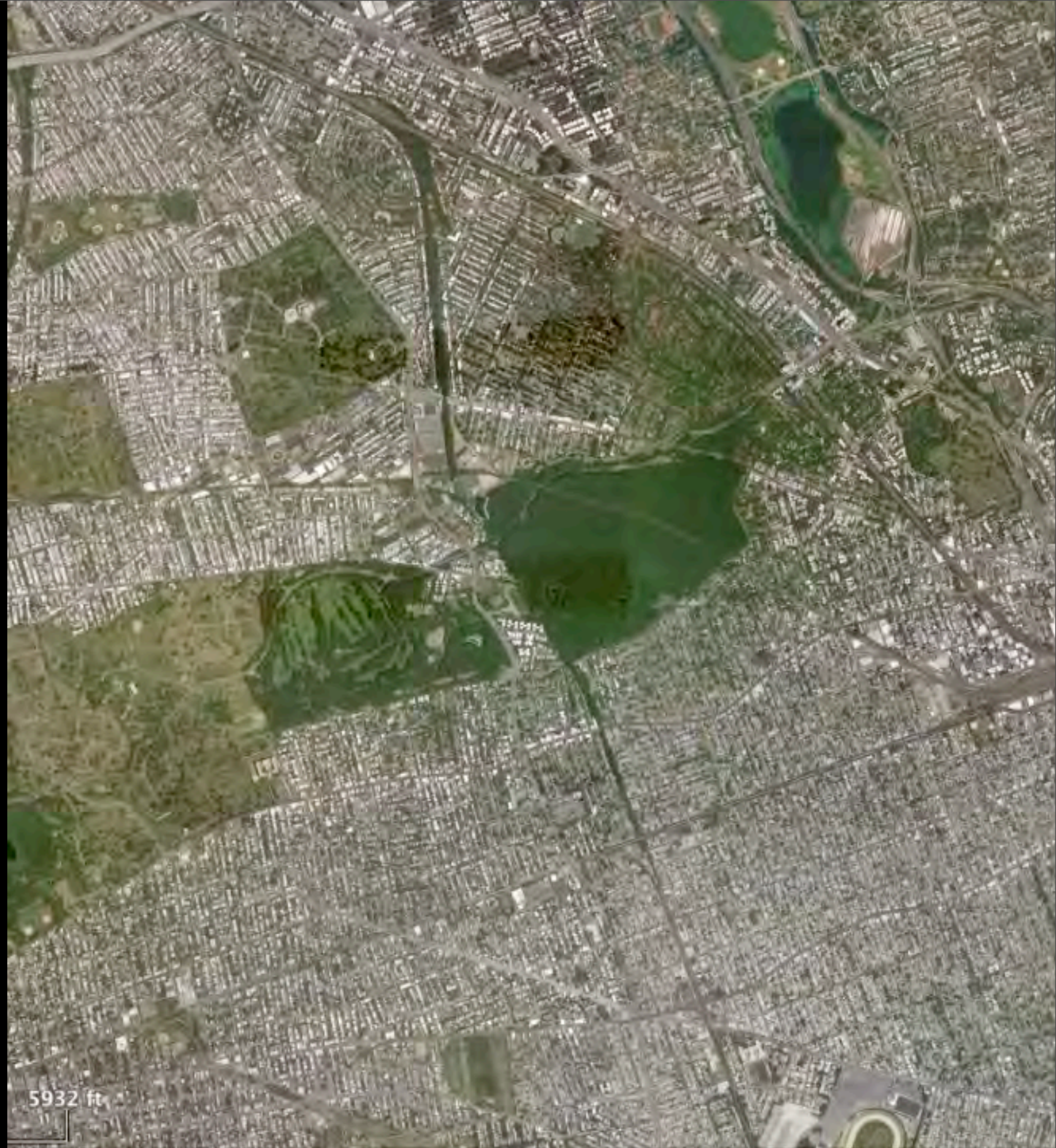
It feels more natural in some ways because of these stone walls. And then what's growing up there is so much more robust and stronger than anything that was ever growing up on the High Line. In the Embankment, you really feel like you have a forest in the middle of Jersey City."

— Robert Hammond, the co-founder and executive director of Friends of the High Line



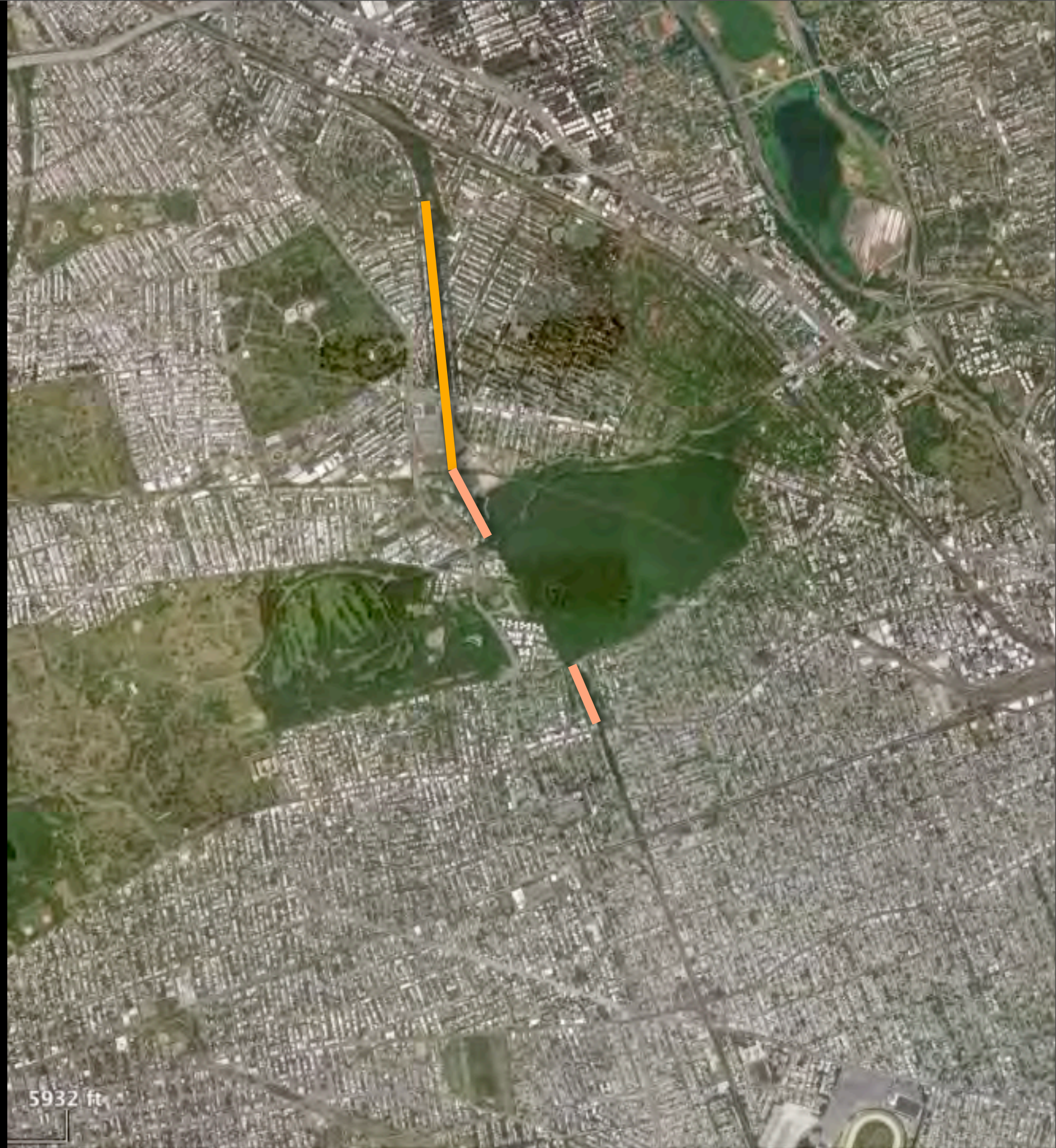
Possibilities

Each
Segment Has
A Different
Physical
Characteristic



Each Segment Has A Different Physical Characteristic

- Earth Embankment



Rego Park

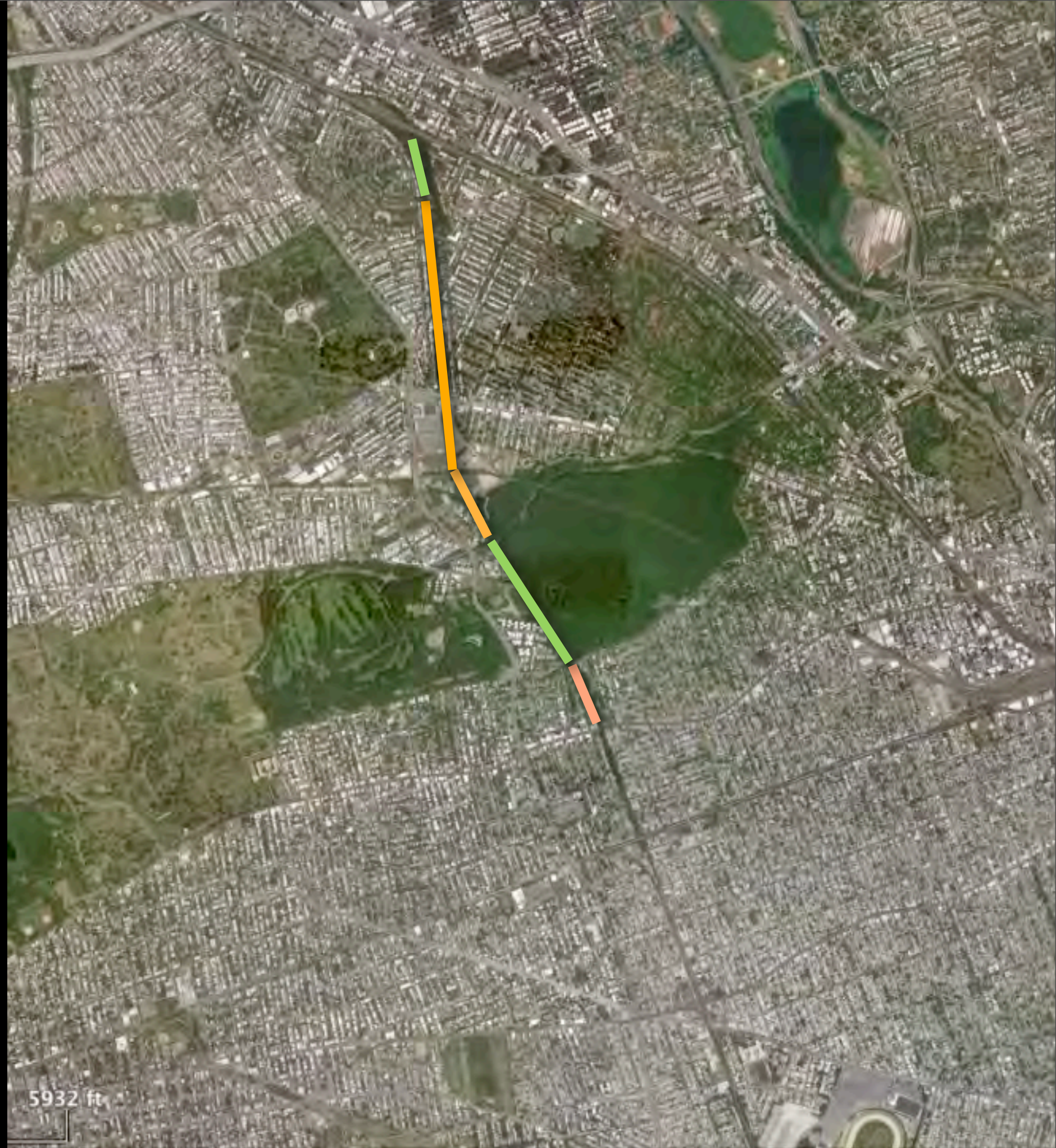


Combined bleacher and retaining embankment



Each Segment Has A Different Physical Characteristic

- Earth Embankment
- Ravine



A Connector to Forest Park and Brooklyn Queens Greenway



The Band Shell



The Carousel



The Pine Woods



Each Segment Has A Different Physical Characteristic

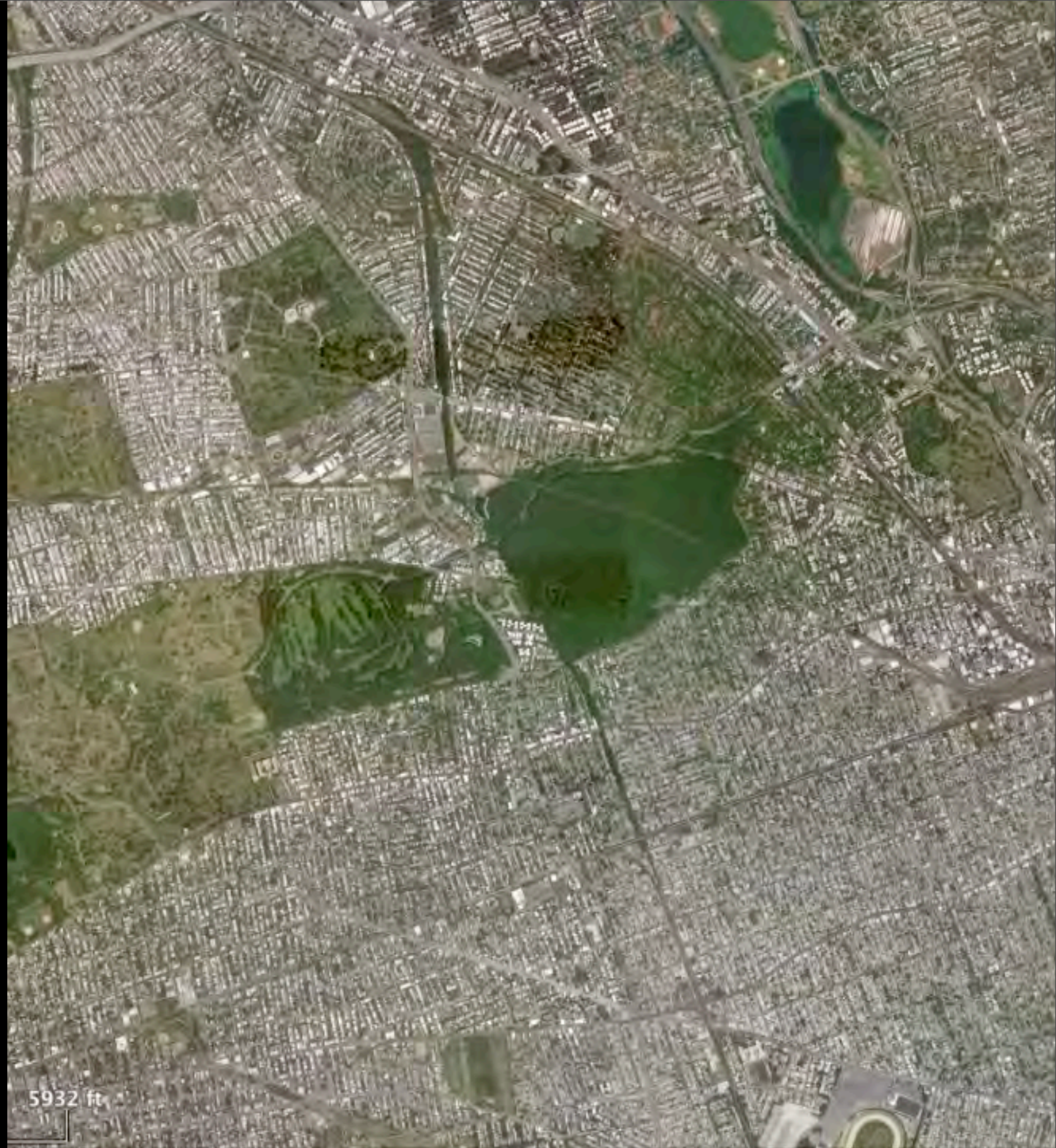
- Earth Embankment
- Ravine
- Elevated Viaduct



Ozone Park



Each
Segment Has
A Different
Neighborhood
Characteristic



Each Segment Has A Different Neighborhood Characteristic

- Residential



Each Segment Has A Different Neighborhood Characteristic

- Residential
- Commercial



Each Segment Has A Different Neighborhood Characteristic

- Residential
- Commercial
- Mixed Use



Each Segment Has A Different Neighborhood Characteristic

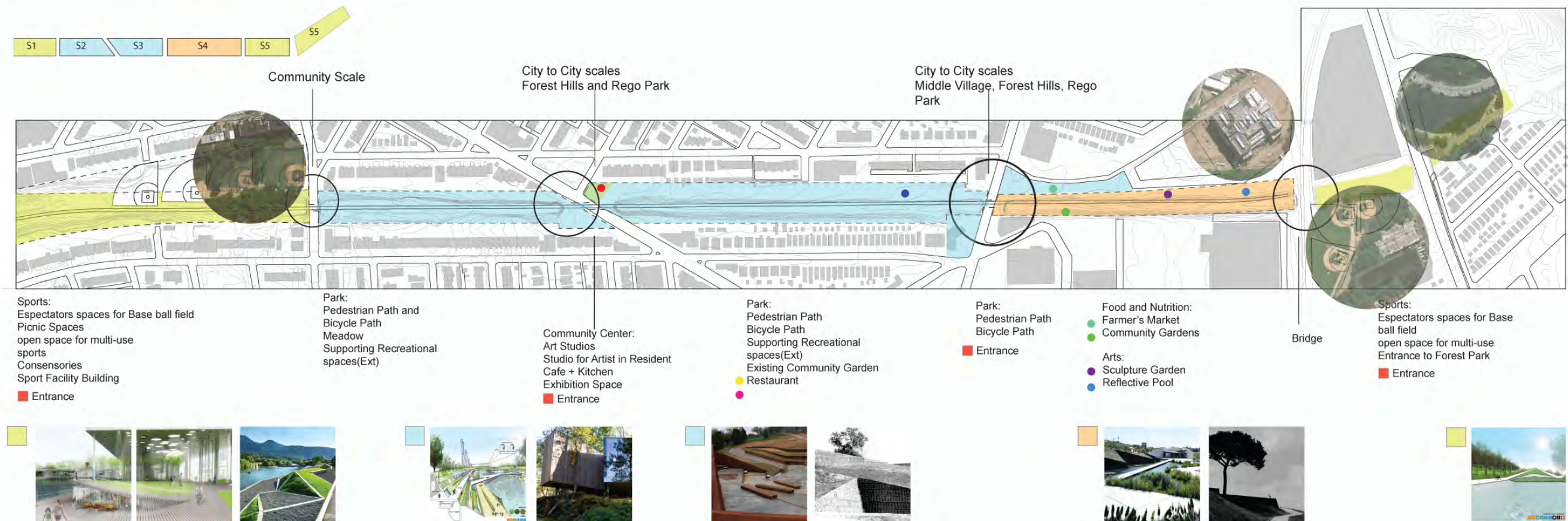
- Residential
- Commercial
- Mixed Use
- Open Space



Offering the Possibilities of Programing a Variety of Activities and Experiences along its Length

SITE PROGRAM DIAGRAM

Plan Scale: 1"=1/64"



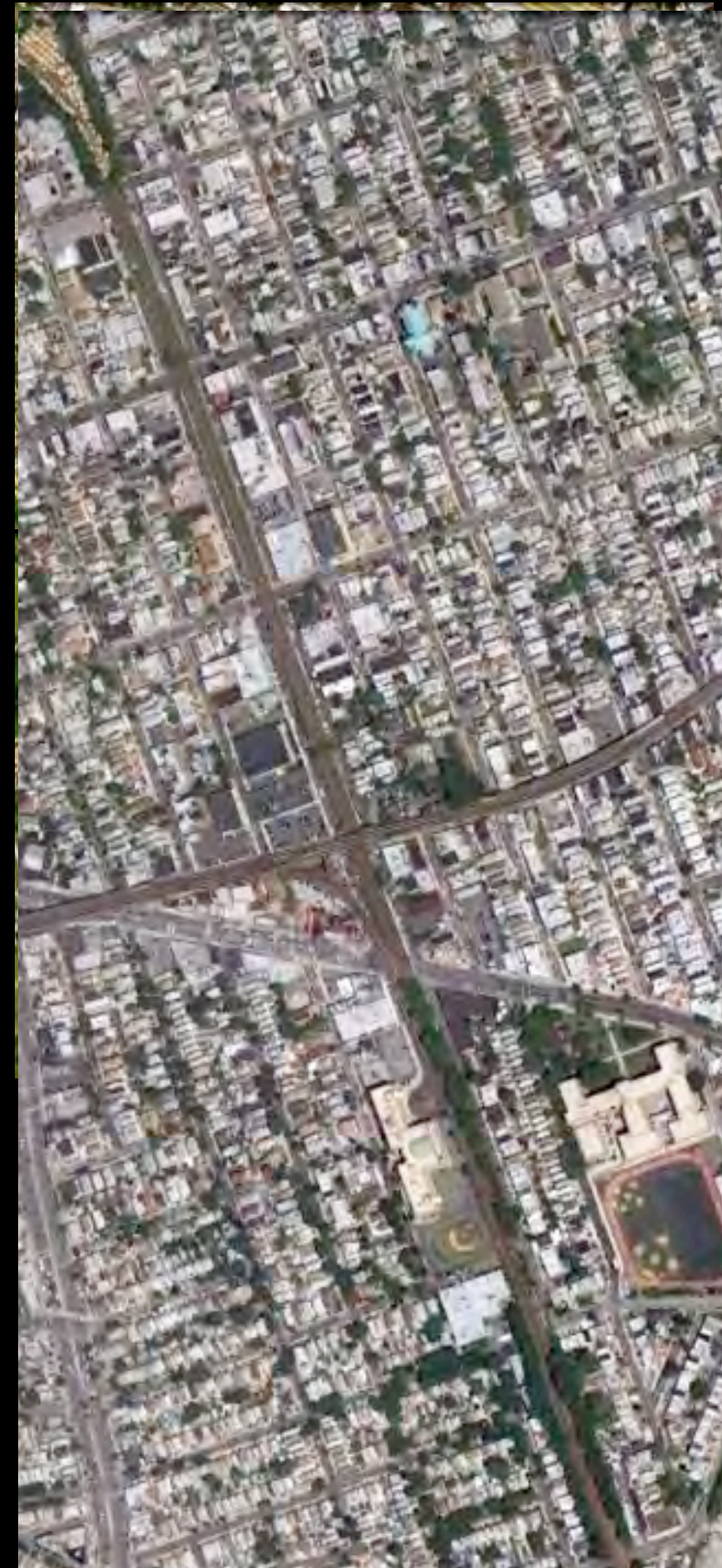
Public Benefits

QueensWay Possibilities

Cultural Opportunities , Community Resource & Potential

Programs:

- Walking Jogging and Biking
- Seasonally Multi-Ethnic Food Festivals
- Public Art Installations
- International Music Concerts /Spoken Word Events
- Community Garden Clubs and Horticultural Activities
- Activities between the Forest Hills and Glendale Little League
- Public School Teaching Gardens
- Senior Citizen Fitness and Walking Groups
- Outdoor Yoga and TaiChi Flexibility Classes
- Boy Scout and Girl Scout Training
- K-12 Art Programs
- Bird Watching and Nature Classes
- Beekeeping



New Park Space

GOAL:

Create a New Park Space for Residents ,
Workers and Visitors to Queens

Two of the three City Council
districts that adjoin the QueensWay rank in the bottom
third in the ranking of parkland per 1000 residents.

New Park Space

The QueensWay, based upon preliminary estimates, would add approximately 370,000 square feet of new recreation and green space to these neighborhoods.

It will also link them to two of Queens' four major public space resources- Forest Park and Gateway National Recreation Area (via the Jamaica Bay Greenway).

New Park Space

Research....“overwhelmingly verifies” that
landscaped parks increase the
value of adjacent properties, typically by 20%.”

In ‘The Impact of Parks and Open Spaces on Property Values’ –
a 2007 article written by Texas A&M University Professor John L. Crompton

Economic Development



Economic Development



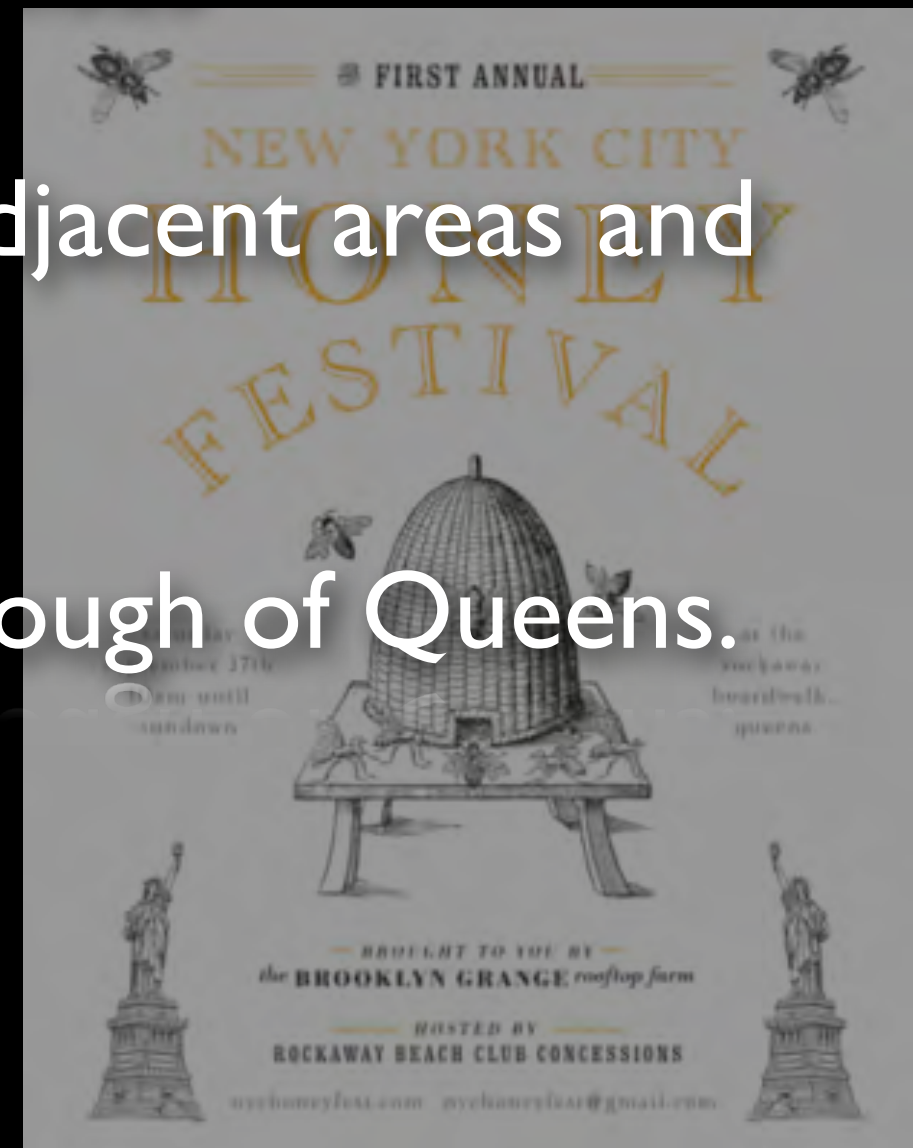
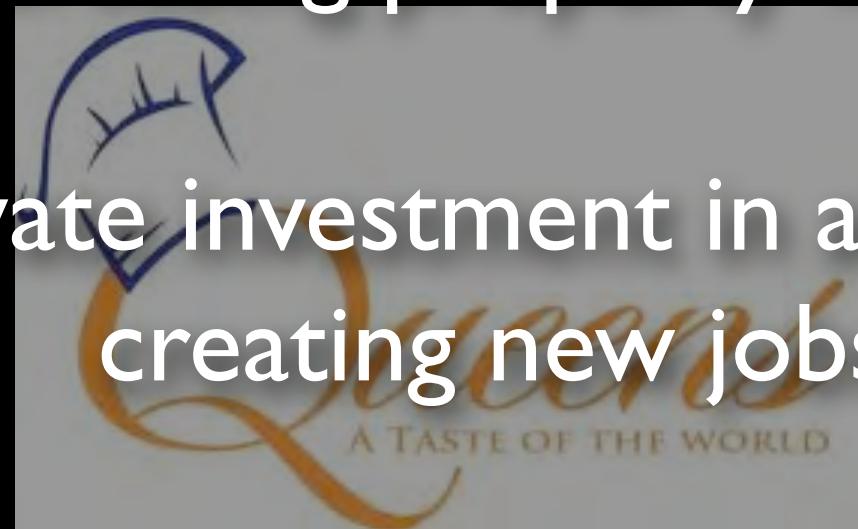
GOAL:



Increasing property values



Catalyzing private investment in adjacent areas and creating new jobs



Drive cultural tourism to the Borough of Queens.

Cultural Development

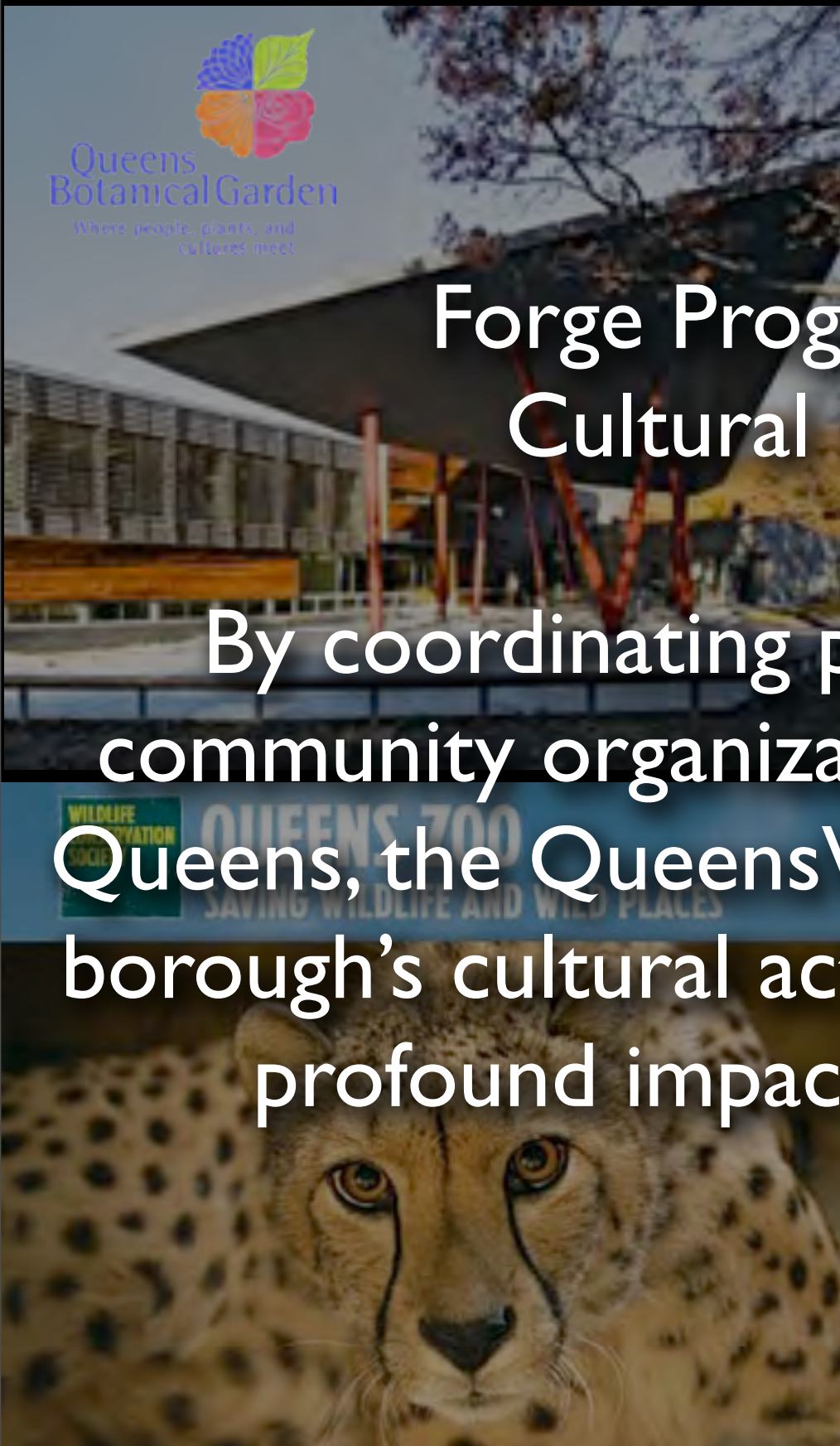


Cultural Development

GOAL:

Forge Programming Partnerships with Cultural Institutions in Queens

By coordinating programming with cultural and community organizations throughout the borough of Queens, the QueensWay project can help promote the borough's cultural activity. Cultural tourism can have a profound impact on economic development.



Active Living

GOAL:

To Promote Active Living to Improve Health

Forty-nine percent of Americans get less than the minimum recommended amount of physical activity and fully 36 percent of U.S. adults engage in no leisure-time physical activity at all.

The solution is to increase access to places and opportunities for physical activity.



Active Living



The QueensWay will provide new space for physical activity, it will be promoted as a place to bike, walk and run. Programs will be created to encourage healthy living.

Active Living



The QueensWay could link bicyclists with a large network of off-road bicycle routes, notably the 3.5 miles of bike paths in Forest Park.

In addition, the southern terminus of the QueensWay is one mile from an emerging 20-mile, largely off-road Jamaica Bay/Gateway Greenway bike trail.

Improve Quality of Life



GOALS:

Improve Quality of Life for Queens Residents

Work with Local Organization and Schools
to create Community Programs

The QueensWay

From This To This



Blight / Wasted
Opportunity



Public Park /
Economic Engine

Improve Quality of Life

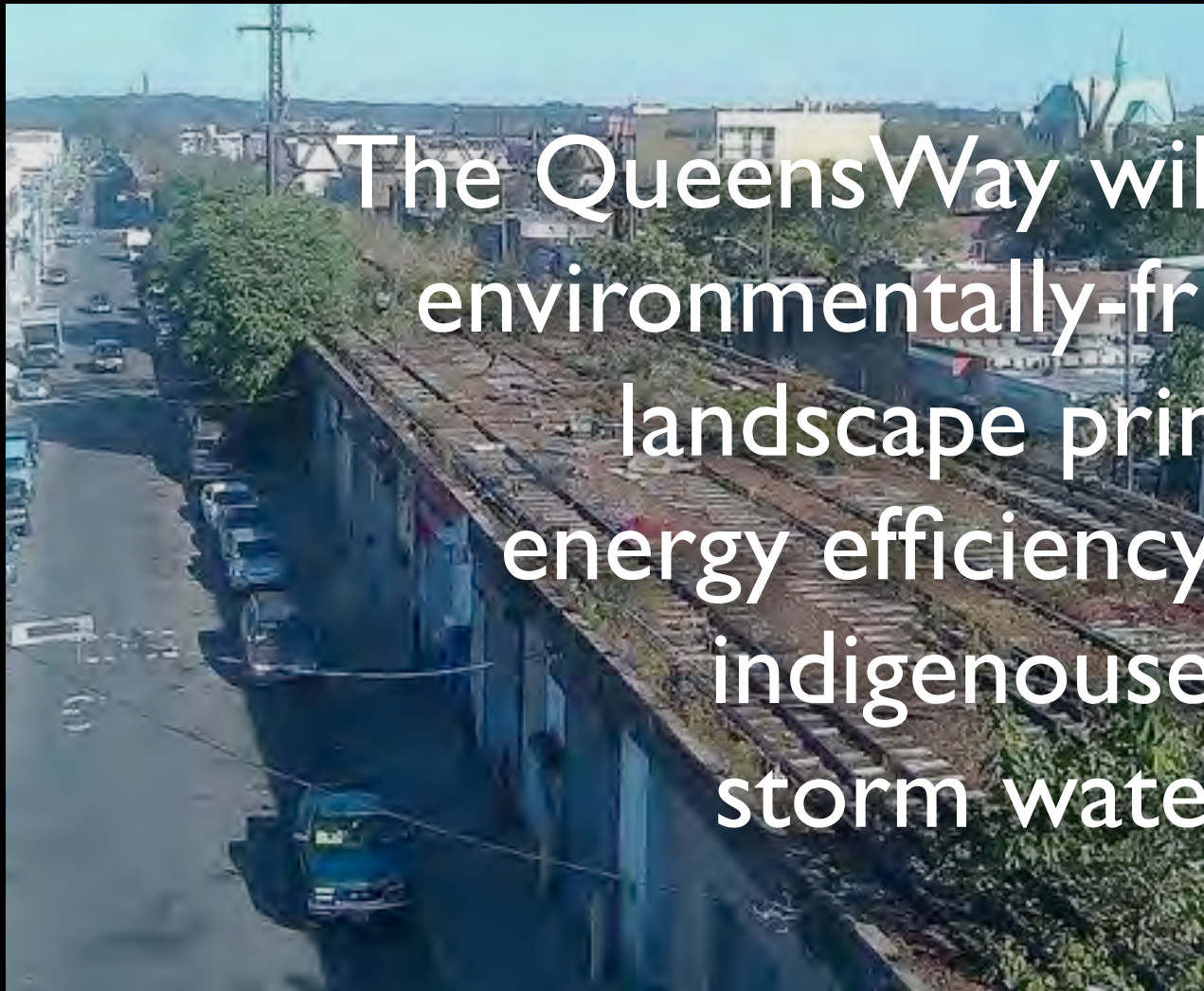


Gardening, Urban Farming, and Environmental Educational programmatic partnerships could be formed with the over 20 schools located adjacent to the QueensWay from Forest Hills to Ozone Park

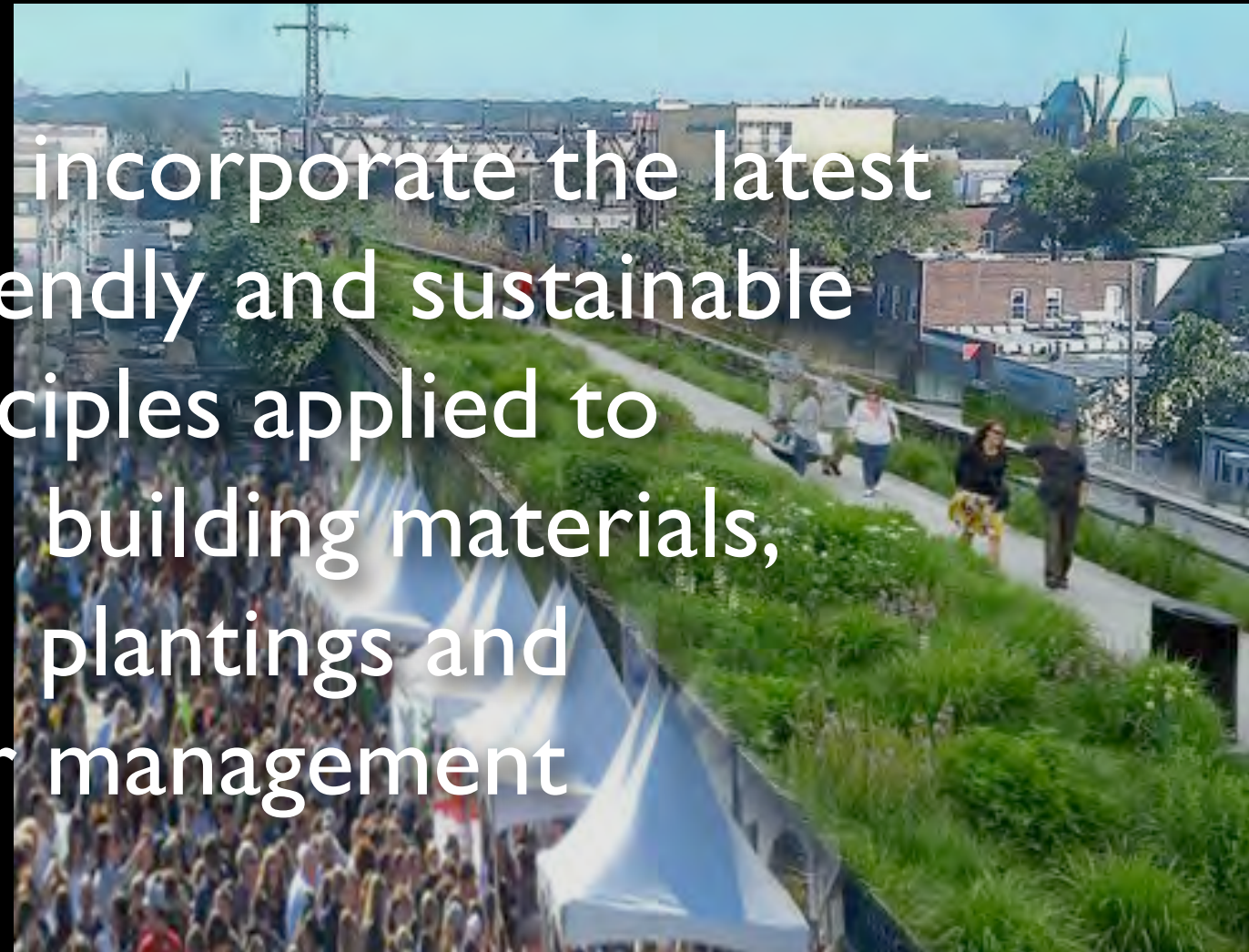
**Blight / Wasted
Opportunity**

**Public Park /
Economic Engine**

Improve Quality of Life



The QueensWay will incorporate the latest environmentally-friendly and sustainable landscape principles applied to energy efficiency, building materials, indigenous plantings and storm water management



**Blight / Wasted
Opportunity**

**Public Park /
Economic Engine**

Improve Quality of Life

GOAL: Create Safe Space

The New York Times® Reprints

This copy is for your personal, noncommercial use only. You can order presentation-ready copies for distribution to your colleagues, clients or customers [here](#) or use the "Reprints" tool that appears next to any article. Visit www.nytreprints.com for samples and additional information. [Order a reprint of this article now.](#)



June 10, 2011

The Park Is Elevated. Its Crime Rate Is Anything But.

By MICHAEL WILSON

The images on Christine C. Quinn’s television a few years ago would seem to have been a worst nightmare for everyone — including her — involved in a highly anticipated new attraction for tourists and locals.

The cameras were filming up on the elevated train line in Chelsea, which was soon to be called a “park in the sky,” and showed the sprawled body of a woman, murdered and dumped there.

Ms. Quinn, the City Council speaker, recalled the scene this week, not with a shudder, but with a broad grin.

“‘[Law & Order: S.V.U.](#),’” she said. “My favorite!” On Tuesday, She stood somewhere in the vicinity of the spot on what is now the [High Line](#), at the ribbon-cutting of its new extension. “The body was up here,” she said with pride. That is when she knew: “We had made it.”

The High Line park turned two years old this month, commemorating the occasion by doubling its length to about a mile, from Gansevoort Street to West 30th Street. Among the many facts and figures people keep track of in this much-studied park, essentially found space on a crowded island, are statistics that tell whether crime has found it, too, and the numbers are in.

Or more accurately, the number is in: zero. The police, the city’s Department of Parks and Recreation and the founders of the High Line all say there have been no reports of a major crime — assault, larceny, robbery, worse — since its opening.



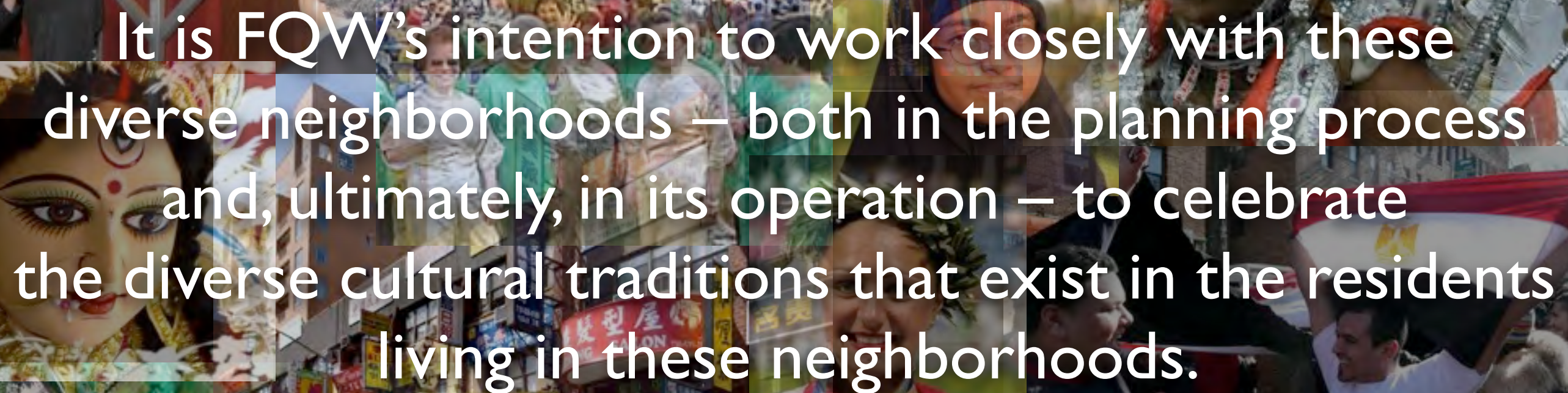
Link Diverse Neighborhoods in Queens

GOAL:

Connect the Diverse Neighborhoods of Queens

- Most Ethnically Diverse Urban Areas in New York
- Population: 2.2 Million
- 48.5% Foreign Born
- Over 100 Different Nationalities
- 138 different languages are spoken in Queens

Link Diverse Neighborhoods in Queens



It is FQW's intention to work closely with these diverse neighborhoods – both in the planning process and, ultimately, in its operation – to celebrate the diverse cultural traditions that exist in the residents living in these neighborhoods.

A collage of various cultural images including religious figures, people in traditional costumes, and festival scenes, with a central text overlay. The images include a man lighting candles, a Hindu deity, a person in a feathered headdress, a woman in a hijab, a man in a turban, a person in a beaded headband, and a person in a feathered headdress. The text overlay reads: "It is our hope that the QueensWay as a result of its 3.5 mile linear structure will encourage and promote International Cultural Arts and Culinary Food Festivals providing a rich cultural experience for QueensWay visitors."

Link Diverse Neighborhoods in Queens

It is our hope that the QueensWay as a result of its 3.5 mile linear structure will encourage and promote International Cultural Arts and Culinary Food Festivals providing a rich cultural experience for QueensWay visitors.

Wednesday, September 19, 12

A collage of various cultural images including religious figures, people in traditional costumes, and festival scenes, with a central text overlay. The images include a man in a black robe lighting candles, a Hindu deity statue, a person in a large feathered headdress, a woman in a hijab, a man holding a flag, and children in traditional headbands. The central text reads: "It is our hope that the QueensWay as a result of its 3.5 mile linear structure will encourage and promote International Cultural Arts and Culinary Food Festivals providing a rich cultural experience for QueensWay visitors."

Link Diverse Neighborhoods in Queens

It is our hope that the QueensWay as a result of its 3.5 mile linear structure will encourage and promote International Cultural Arts and Culinary Food Festivals providing a rich cultural experience for QueensWay visitors.

Wednesday, September 19, 12

What Has Been Done To Date ?

- Creation of the Friends of The QueensWay
(over 2000 and growing!)
- Partnership with Trust for Public Land
- TPL Commitment to Feasibility Study
- Community Outreach
- Press Coverage
- Pratt Institute Design Studies



Next Steps!

Phase I: Feasibility Study and Vision Plan

- Determine Structural and Environmental Conditions and Prepare engineers' report.
- Engage Community in Identifying Desired Features
- Prepare Preliminary Design Master Plan
- Identify Funding Sources for Final Design and Construction
- Identify options for Maintenance and Operations and Programing
- Prepare Cost Estimates for Construction

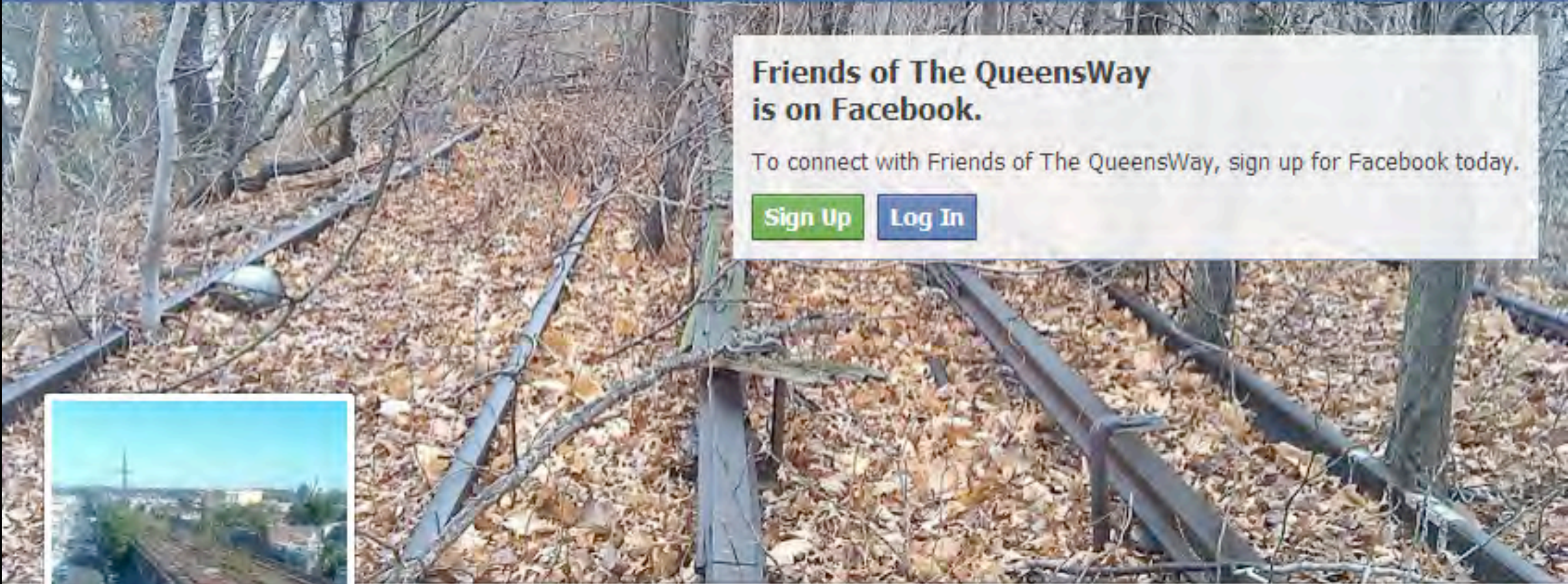
Future Phases: Final Design and Construction

Join Us
Follow Us
Support US!

Log In

☐ Keep me logged in

[Forgot your password?](#)

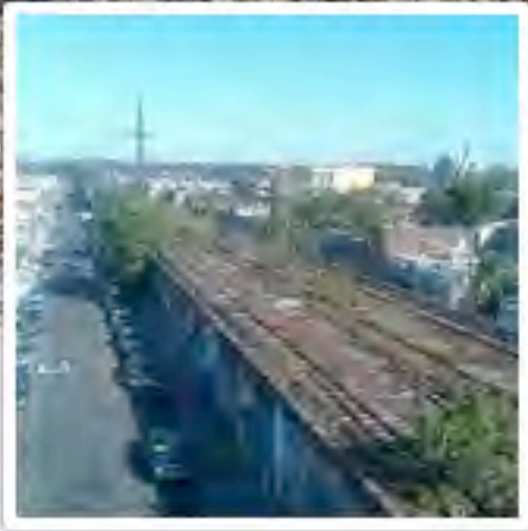


**Friends of The QueensWay
is on Facebook.**

To connect with Friends of The QueensWay, sign up for Facebook today.

Sign Up

Log In



Friends of The QueensWay

414 likes · 51 talking about this

Like

Non-Profit Organization
Friends of The QueensWay is a group of New York City residents who propose to establish a greenway, consisting of a bicycle and pedestrian path, on the abandoned Long Island Railroad Rockaway Beach Branch right-of-way.

About



Photos

414

Likes



Events

change .org

1003 X 1040

change.org

Start a Petition

Browse Petitions

Find

English (US) | Login or Sign Up

The City of New York: Create a Greenway along the Abandoned Rockaway Beach Branch Right-of-Way

SIGN THIS PETITION

First Name

Last Name

Email

Address

City

State


Zip Code

Why are you signing? [Add a reason \(optional\)](#)

SIGN

☒ Display my signature publicly

By signing, you accept Change.org's [terms of service](#) and [privacy policy](#).




Signatures

1,753 out of 2,000

Petitioning

New York City Council (+ 12 others)

 Created By

Friends of The QueensWay

Queens, NY

About this Petition

Petition Letter

Petition Updates

A 3.5 mile stretch of the old Rockaway Beach Branch railroad right-of-way currently lies abandoned in Central and Southern Queens. Over the past 60 years, since rail service ended, it has become a dumping ground for garbage, abandoned cars and other debris, and is one of the largest tracts of unused land in an area populated by hundreds of thousands.

An incredible opportunity exists to transform this abandoned, unsightly and in many places hazardous space into a beautiful 3.5 mile public park and bikeway extending south from Rego Park to Ozone Park. A multi-use path would provide a recreational and commuter corridor through Rego Park, Forest Hills, Woodhaven, Richmond Hill and Ozone Park. It would link these communities with Forest Park and the Brooklyn-Queens Greenway and to nearby bike lanes leading to the recreational spaces of Rockaway Beach and Jamaica Bay, including the Shore Parkway path, Jamaica Bay Wildlife Refuge and Gateway National Recreation Area. It would also connect at least five subway lines and numerous commercial districts, shops and schools and the Aqueduct Racetrack, Casino and future Convention Center.

Greenspace, sports facilities and community gardens could be created for family recreation and for use by the several schools along the route. A safe bicycle route parallel to Woodhaven and Crossbay Blvd.'s would exist so that people could ride to school, go shopping, visit friends, reach public transportation or simply enjoy a sunny day.

The City and MTA have repeatedly indicated that they do not intend to reactivate this rail line anytime in the near future and in some places ball fields and parking lots have been built over the rails. Moreover the cost of reactivating the line would be massive as there remains no useable infrastructure - even the railbed, which has suffered from significant erosion would need to be reconstructed and widened. This, combined with strong opposition from those who now live along the line make it very unlikely that a railroad will ever be reactivated. Rather than leave this land to continue to degrade and fill with trash for another 60 years, action should be taken now to preserve this gem bringing greenspace to more Queens families, and improving recreation, the economy and the quality of life of those living along it.

Thank you!

Twitter

The screenshot shows the Twitter profile of @TheQueensWay. The header includes navigation links for Home, Connect, and Discover, along with a search bar and user icons. The profile card at the top features a profile picture of a greenway, the name 'The QueensWay', the handle '@TheQueensWay', and a bio: 'NYC residents proposing a #greenway, consisting of a bicycle & pedestrian path, on the abandoned LIRR Rockaway Beach Branch. #TheQueensWay #QueensHighLine'. It also shows 'Following' status, 937 tweets, 601 following, and 375 followers.

Below the profile card is a 'Tweet to The QueensWay' section with a text input field containing '@TheQueensWay'. To the left of the main tweet area is a sidebar with links to 'Tweets', 'Following', 'Followers', 'Favorites', 'Lists', and 'Recent images'. Below these links are three small image thumbnails. Further down the sidebar is a 'Similar to The QueensWay' section featuring three accounts: HDC (@HDC_NYC), ForumforUrbanDesign (@ForumFUD), and New York ASLA (@NYASLA), each with a 'Follow' button.

The main 'Tweets' section displays a list of tweets. The first tweet is from @TheQueensWay, dated 4m, stating: 'Right now we have 1,753 out of 2,000 signatures on our petition! Please sign and share: chn.ge/queensway'. The second tweet is from Eric Ulrich (@eric_ulrich) dated 2 Jun, mentioning 'Cuomo's \$4 Billion Plan for Project in Queens Falls Apart' and including a link to 'nyti.ms/JG90nR'. The third tweet is from lowline (@lowlinenyc) dated 2 Jun, promoting an event with the hashtag #Sun #Fun #DayLife and mentioning @lowereastnyc and @SonsOfEssex. The fourth tweet is from Anandi A. Premilall (@AAPremilall) dated 1 Jun, stating 'Now we can really start envisioning how relaxing it would be to spend the summer walking, biking, and meeting friends on @TheQueensWay!!'. The fifth tweet is from Peter W. Beadle (@pwbnyrc) dated 2 Jun, mentioning 'Aqueduct Convention Center plan dead' and a link to 'bloomberg.com/news/2012-06-0...'. The sixth tweet is from @TheQueensWay dated 1 Jun, stating 'Plans for Genting to build a \$4 billion convention center in Southern Queens has failed' and including a link to 'fb.me/1qoXbsZ2d'.

At the bottom of the page is a footer with the Twitter logo and copyright information: '© 2012 Twitter About Help Terms Privacy Blog Status Apps Resources Jobs Advertisers Businesses Media Developers'.

Thank You

The QueensWay

Rego Park

Forest Hills

Forest Park

Richmond Hill

Ozone Park

Woodhaven

Google

Imagery Date: 6/2/2011

40°43'01.25" N 73°51'31.99" W elev. 72 ft

Eye alt 15.66 mi